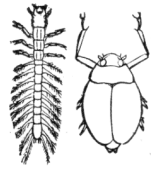


Health of a Stream



How many aquatic macroinvertebrates did you find that have a **high** pollution tolerance?

How many aquatic macroinvertebrates did you find that have a **medium** pollution tolerance?

How many aquatic macroinvertebrates did you find that have a **low** pollution tolerance?

Make an educated guess about the water quality of the stream based upon which aquatic invertebrates were the most plentiful.

